



Magazine Area

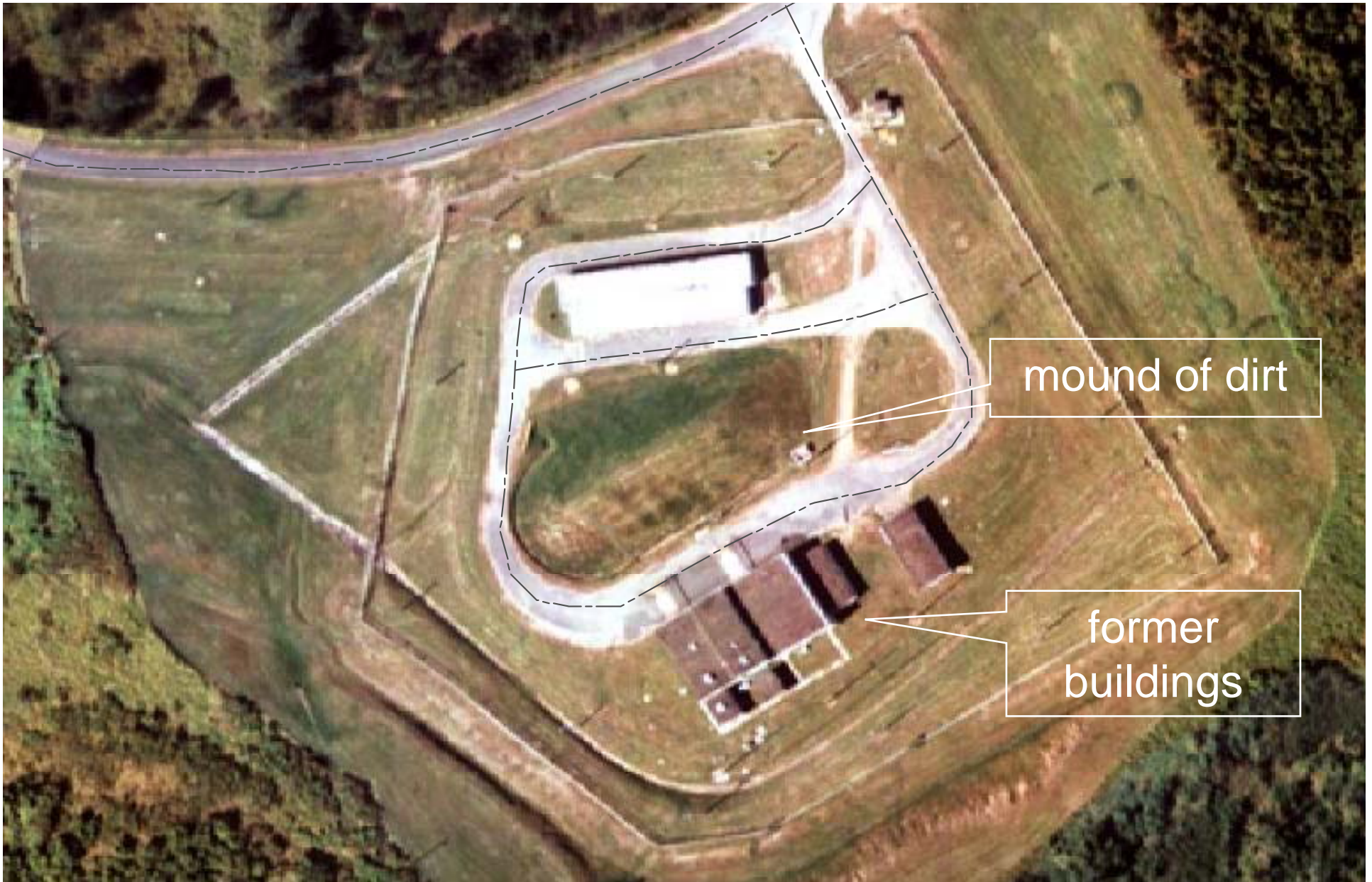




Magazine Area

- **Site was in operation from the late 1950s/early 1960s until early 2000s**
 - Storage of ammunition
- **Mound of dirt was placed at the site as a deflection barrier sometime between 1958 and 1961**
 - To protect nearby buildings in case of an accidental explosion
 - The buildings are no longer there





Deflection barrier placed between buildings and magazines

